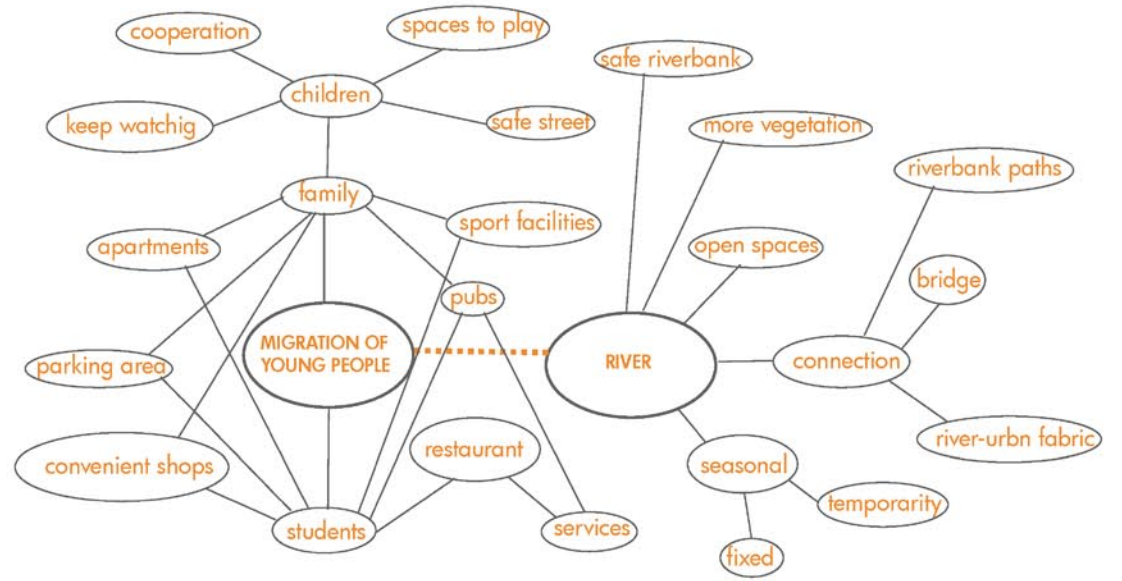


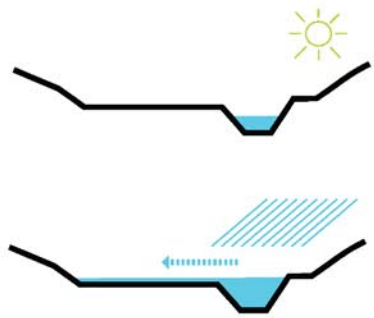
ACROSS THE RIVER AND INTO THE CITY

New Value for Historical City-Livability, Sustainability and Continuity, Kanazawa 08-18/06/2011

Regional strategy: disaster prevention



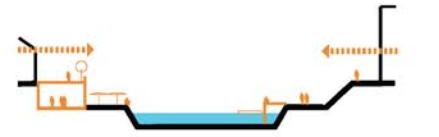
1. Prevention of disaster in the city centre: the water level is lowered through the restoration of the former rice fields in some suburban areas.



Areas for rice fields



2. Redevelopment of the riverbank in the city centre.



City centre



Plan, scale 1:50,000

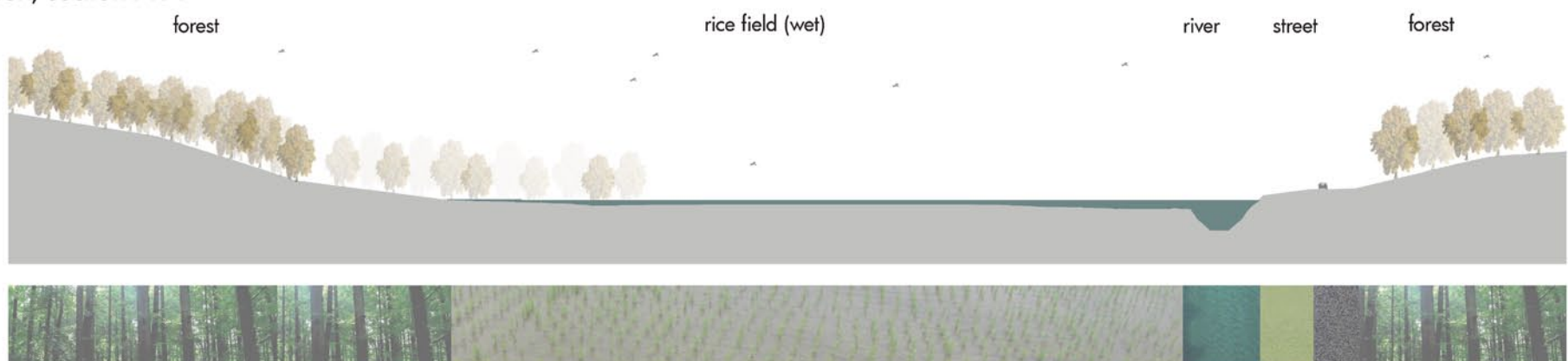
0 km 2,5 5 10

Seasonal behaviour of the river

Dry season, section A-A'



Rainy season, section A-A'



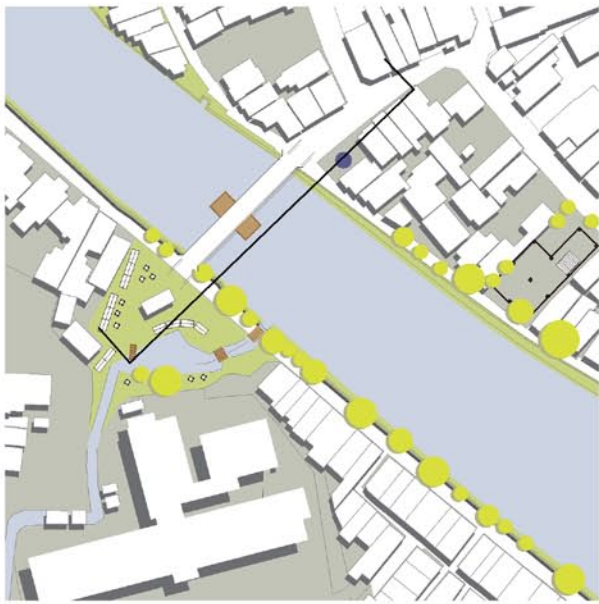
Teacher: Prof. Etra Connie Occhialini (ILAUD)

Students: Piero Sassi (FAF, Ferrara), Che Peiping (SCUT, Guangzhou), Ryutaro Amemiya (WASEDA, Tokyo), Yasuhide Araki (KIT, Kanazawa), Kaori Yokota (KIT, Kanazawa),

Shizuno Nakatani (Kanazawa University), Nguyen Thien (Kanazawa University, Vietnam)



Focus areas, scale 1:1000



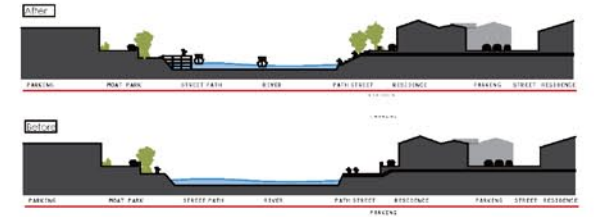
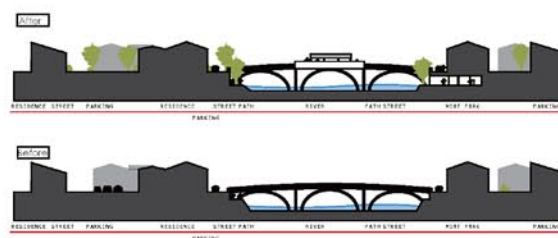
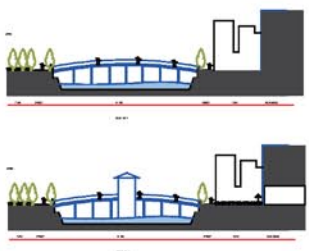
Masterplan A, Nakano Bridge



Masterplan B, Asanogawa Bridge



Masterplan C, Spot Between the Asanogawa Bridge and Umeno Bridge



Teacher: Prof. Etra Connie Occhialini (ILAUD)

Students: Piero Sassi (FAF, Ferrara), Che Peiping (SCUT, Guangzhou), Ryutarō Amemiya (WASEDA, Tokyo), Yasuhide Araki (KIT, Kanazawa), Kaori Yokota (KIT, Kanazawa),

Shizuno Nakatani (Kanazawa University), Nguyen Thien (Kanazawa University, Vietnam)

Urban strategy: riverbank redevelopment



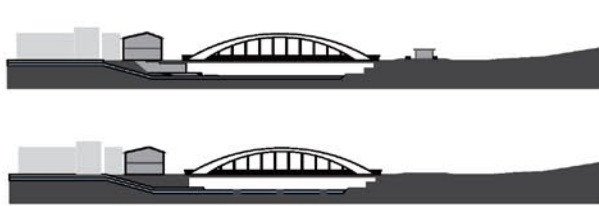
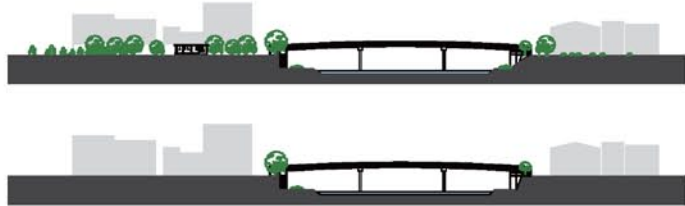
Plan, scale 1:1,000



Masterplan D, Umeno Bridge



Masterplan E, Tenjin Bridge



Teacher: Prof. Etra Connie Occhialini (ILAUD)

Students: Piero Sassi (FAF, Ferrara), Che Peiping (SCUT, Guangzhou), Ryutaro Amemiya (WASEDA, Tokyo), Yasuhide Araki (KIT, Kanazawa), Kaori Yokota (KIT, Kanazawa),

Shizuno Nakatani (Kanazawa University), Nguyen Thien (Kanazawa University, Vietnam)