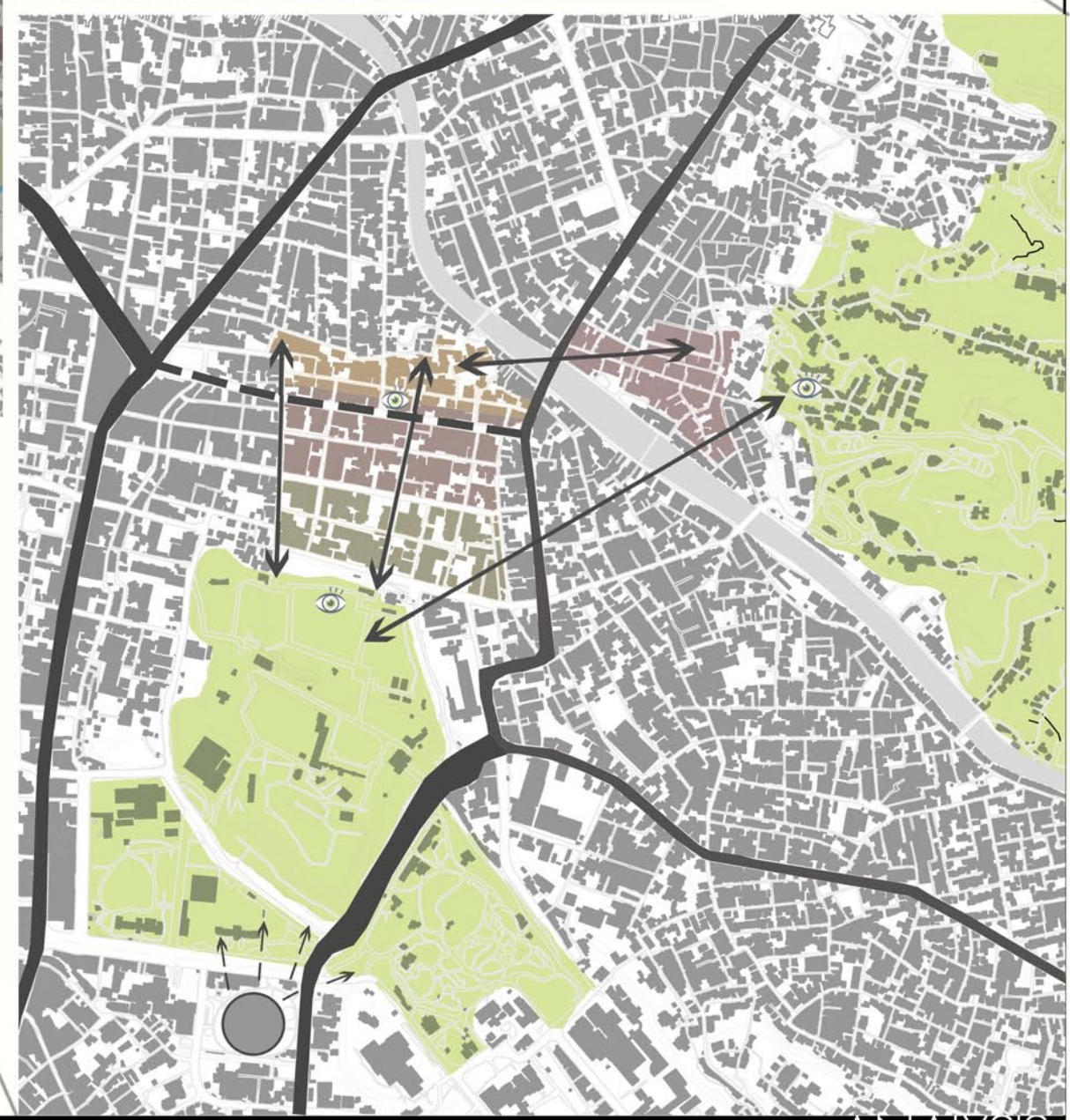
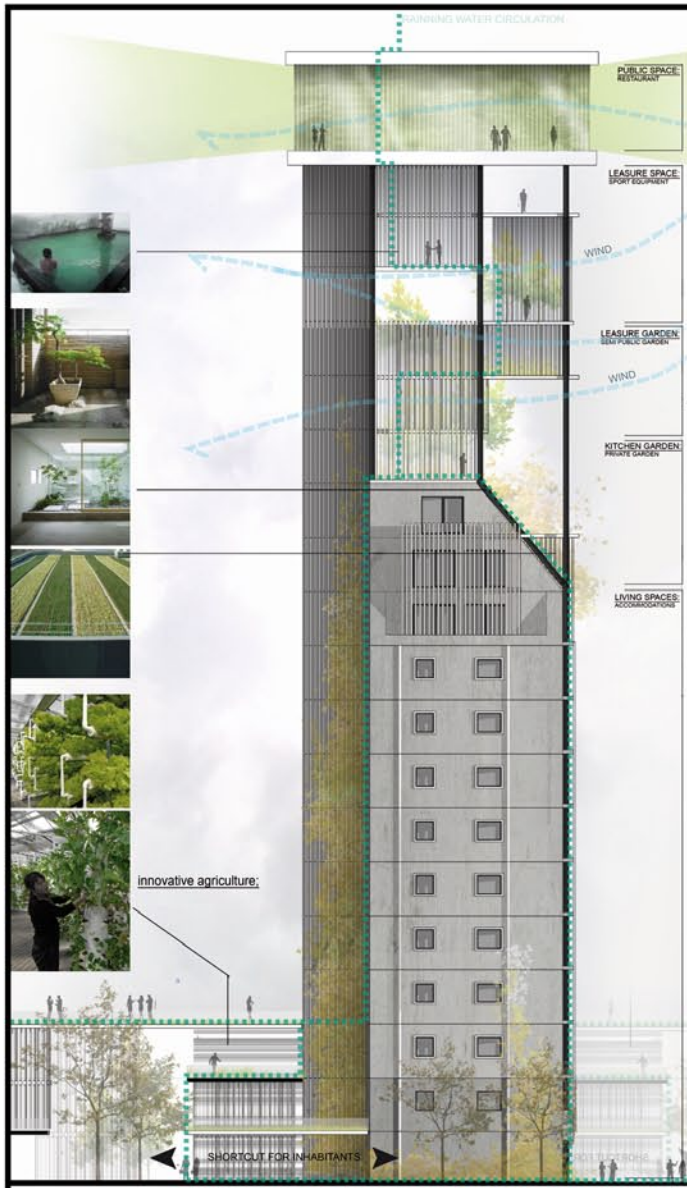


FROM REGIONAL SCALE TO URBAN SCALE

- S** Topography:
- Mountain and hills => are the visual environmental reference when you walk along the city.
 - Green system => the city is characterize from a overdrive web of public garden and private garden, with a plentiful biodiversity.
- T**
- Water system => the sea side, the rivers and the channel, the irrigation system of the land, and the heavy seasonal precipitations are structural elements of the city.
- E**
- S** Historical urban structure:
- The complex with Castle and Kenrouken garden, the fine grain of urban old fabric and historical streets.
- S**
- A** Modern city:
- The Museum of 21st Century, which is the most important modern urban reference.
 - It improves the quality of its area, and works like a connection between the historical city centre and the main shopping street, which is used also from young people of Kanazawa.
- P**
- R** Modern roads: there are some main regional road getting through to the city. These roads work like a cutter for the urban environment.
- O** Loss of agriculture: expansion of suburbia is destroying the agricultural landscape around the city.
- B** Modern building typologies: these clash with the traditional fabric.
- L** Empty spaces: the urban web has a lot of empty spaces with a lot of potentiality, but all of them are now used for car parks, with no quality.





PROJECT 1

As explained before, high rises in that part of the city gonna be refurbished to become big scale landmarks. According to our concept, we choose to develop a sustainable architecture and propose new facilities; as sport center, restaurants, public gardens, to improve the inhabitant quality of life. The new type of irrigation, taking advantage of the rain by draining water from the top to the bottom, and using traditional fusuma system, to increase the natural air circulation into the building, makes this building more attractive than before. Even kitchen gardens for inhabitant are created to give then the possibility to growth vegetables, and fruits. Making this experience of living unique and innovative, enjoying their live and the city and having a new regard and judgment about Kanazawa.

ELEVATION
ROOF TOP VIEW



SHARE SPACE VIEW
NIGHT VIEW



Smalls contemporary projects will be design around this area of the city, in addition of new garden. We developed 5 small contemporary project, to make this part of the city unique, a mosaic of old, modern, and contemporary architecture. In addition, those project are good elements for Kanazawa people, making the city more livable.

